



OWI GmbH

■ Rodenbacher Str. 44-46
97816 Lohr am Main
Germany

Tel: ++49 (0) 93 52 5 09-0
Fax: ++49 (0) 93 52 5 09-100
info@owi-lohr.de
www.owi-lohr.de



Technical data

- Modern, CNC-controlled injection moulding machines
- Clamping forces of 1600 – 13000 KN
- Injection weights approx. 20 grams to 6 kilograms
- Maximum mold dimensions:
Width/Height of backing plate 2220/1880mm
Distance between bars 1600mm
Distance between plates 2850 mm
- Monosandwich-2K process and Monosandwich-3K process
- Continuous quality assurance system
- Further processing such as drilling, punching, turning, ultrasound welding of moulded parts
- Assembly and varnishing



Formteile aus Holz und Kunststoff



Design and Variety ■

Durability and Quality ■

Outdoor and Indoor ■

PLASTIC PRODUCTS ■

DIN EN ISO 9001:2008 ■

Wood and Plastic ■



Injection moulded parts for more than 50 years

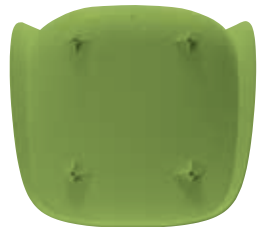
The acquirement of a 3000t injection moulding machine in 1963 marked the beginning of the injection moulding technology at OWI. Millionfold sold models like the beer garden seat and back "Universal" became the cornerstone for a collection of own products.

40 years ago - amongst others - the shell Europa and the pupil chair seat and back Multiset have been developed. In 2015, on the occasion of this jubilee, OWI developed the shells Europa and Student to complement the range.

Thanks to our know-how in wood and plastic new interesting possibilities of variation are arising: Plastic shell with plywood seat liner or plywood shell with plastic cover or laminated wood frame in combination with a plastic shell.

Pictures may show special colours.

ORION



■ ORION

Seatshell made of Polypropylene.

Contemporary design for residential and contract furniture.

Vertically stackable.



OWI



EUR



■ **EUROPA**
textured

Seatshell made of Polypropylene.
Strong design with a dominant chamfer on the side. The ergonomically designed seatshell with textured surface offers a good scratch and slip resistance.



■ **EUROPA**
smooth

Seatshell made of Polypropylene.
The smooth surface is glossy and easy to clean. This makes the seatshell ideal for usage in hospitals and outdoor.





■ EUROPA 2

Seatshell made of Polypropylene.
Glas fibre enforced. Contemporary design with chamfered side.
The front face is textured and slip resistant, the back face is matted.



■ EUROPA 2

Seatshells made of plywood and/or felt complete the product range Europa 2. Those seatshells are shown on our website in our wood catalogue with the product number 5003 and 555.

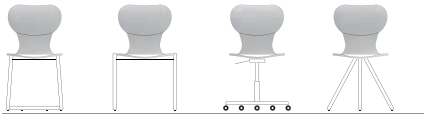
OWI



■ **STUDENT 3/4**

Seatshell made of Polypropylene.

The seatshell Student is made for continuous heavy usage. It is ergonomically shaped and easy to clean. To allow fitting on different frames there are 4 screw bosses moulded under the seat, 150 x 150 mm. The top edge of the back forms a handle strip. Pictures show the first series without face texture.



■ **STUDENT 5/6**

Seatshell made of Polypropylene.

The design of this ergonomically shaped seatshell bases on circles and radii and has the same formal structure as the size 3/4. The top edge of the back forms a handle strip, the screw bosses are moulded in the same grid dimension, 150 x 150 mm. Pictures show the first series without face texture.





■ **STUDENT 1/2 3/4 5/6**

Seatshell made of plywood.

Size 1/2 is made of our shell model 519, size 3/4 of model 529 and size 5/6 of model 573. All models are shown on our website.





■ **UNIVERSE**

Seatshell made of Polypropylene, 2 component structure. Front face textured, back face mirror polished. Convincing ergonomics and straight design. This shell fits on nearly any frame.



■ **UNIVERSE**

Seatshell made of plywood. The PP-seatshell Universe has a matching shell made of plywood with the model number 530. This shell is available with outer faces in decorative veneer and CPL/HPL.

SEATSHELLS



■ **OLYMPIA**

Seatshell made of Polypropylene.
Ergonomically designed with textured surface which offers a good scratch and slip resistance.



■ **EURO-AIR**

Seatshell made of Polypropylene.
UV-stabilized, weatherproof for outdoor use. With slots for ventilation and drainage. Smooth, easy to clean surface.





■ BERMUDA

Seatshell made of HD-Polyethylene.

UV-stabilized, weatherproof for outdoor use. Providing structural support for the back this shell makes even long sitting comfortable. Extraordinarily strong fixing to the frame. Smooth and easy to clean surface with slots for ventilation and drainage.



■ RUNDSCHEMEL R35

Round seat made of Polypropylene.

Lightweight, resilient and stable. The rounded edge is smooth while the textured seat offers a high scratch and slide resistance. Ribs for enforcement under the seat. The position of the screw bosses allows fitting with 3 or 4 screws.



SEATSHELLS ■



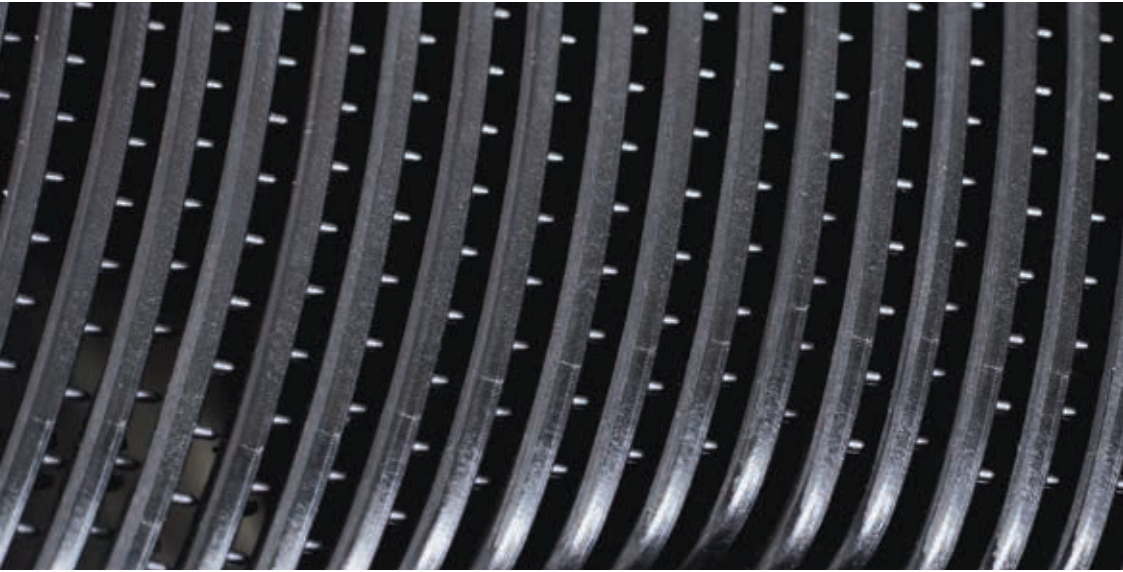
■ AIRPORT

Seatshell made of Polypropylene.

Big easy chair seatshell with raised arms for ergonomic and comfortable seating. The seat is textured and provides good slip resistance.



SEAT AND BACK



■ ULTRA

Seat and back made of Polypropylene. Special texturing provides high scratch and slip resistance. Upholstery liners made of plywood are available for the Ultra product range.

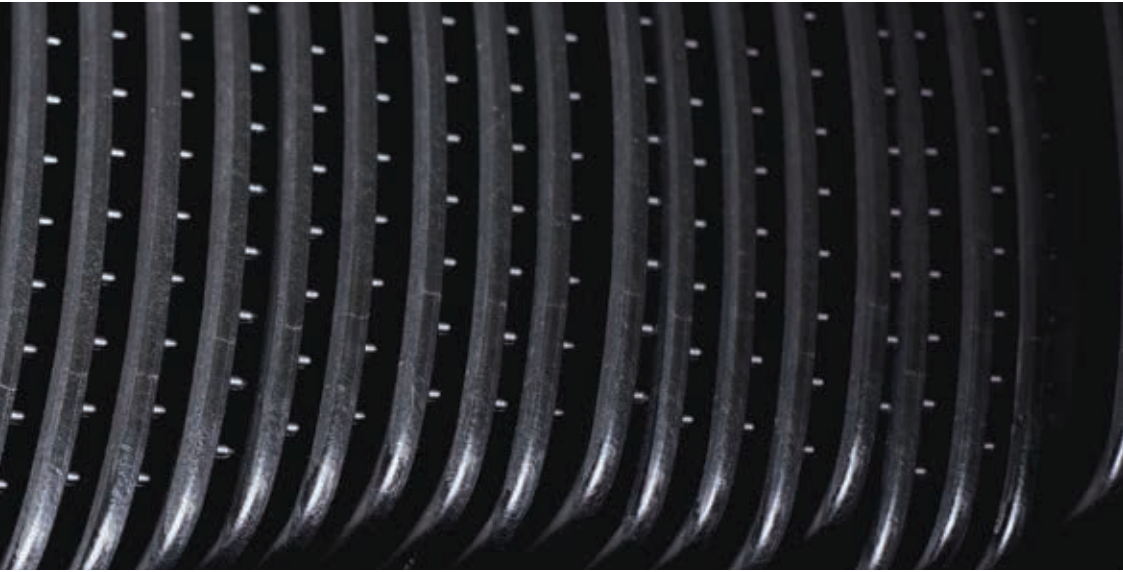


■ MULTiset

Seat and back made of Polypropylene. Multiset has been designed for continuous use. It has proven its suitability in everyday school life for decades. It is lightweight, easy to clean and ergonomically shaped. The fine surface texture provides scratch and slid resistance. Multiset is available in 3 different sizes.



BACK COVERS



■ Back cover LA 19

Textured with diamond pattern.

Back cover made of Polypropylene.

Easy to fit to the matching plywood back by means of moulded plastic clips. Suitable for swivel chairs and visitor chairs with and without height adjustment.



■ Back cover LA 20

Textured with diamond pattern.

Back cover made of Polypropylene.

Easy to fit to the matching plywood back by means of moulded plastic clips. Suitable for swivel chairs and visitor chairs with and without height adjustment.



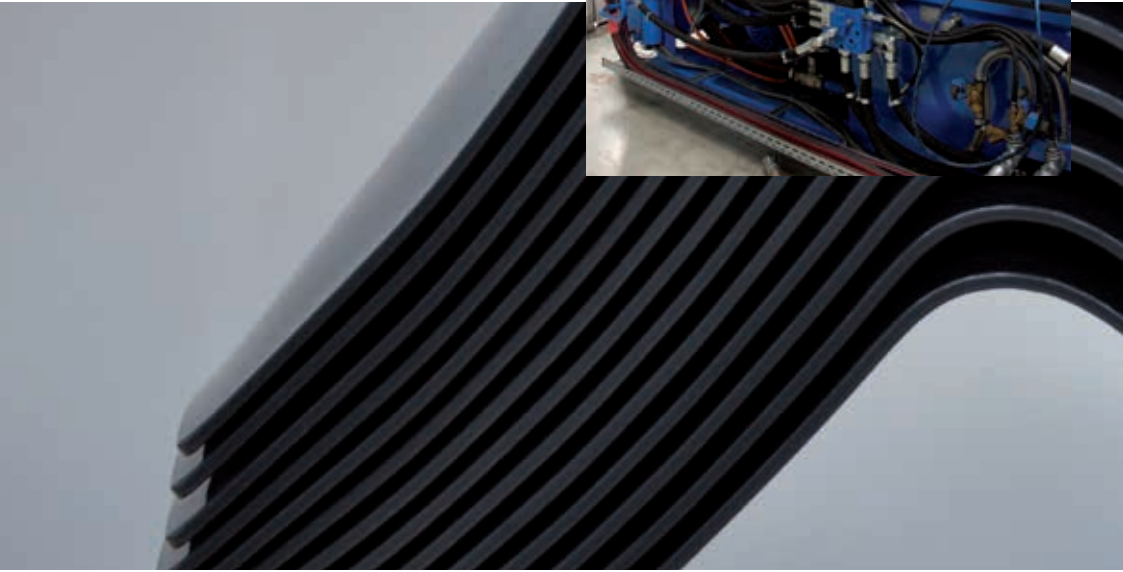
■ Back LS 21

Diamond shaped holes.

Structural back made of Polypropylene.

Our back in contemporary design, light and lightweight still stable. Suitable for swivel chairs and visitor chairs with and without height adjustment. Matching plywood back and upholstery liners available.





■ **Back cover KOMPLETTA**

Back cover made of Polypropylene.

Fitting our plywood backs 418/4, 418/5 and 428/6. The ideal solution for office chairs in timeless, classic design. Suitable for swivel chairs and visitor chairs. The fine texture is scratch resistant.



■ **Back cover LA 2.30 and LA 2.50**

Back cover made of Polypropylene.

Fitting our plastic upholstery backs LPT 11.30 and LPT 11.50. The fine texture is scratch resistant.

SEAT AND BACK COVER ■



■ **KOMPLETTA Seat cover**

Modell K 388/1

Seat cover made of Polypropylene.

Fitting our plywood seats 388

Suitable for swivel chairs and visitor chairs.



■ **KOMPLETTA Seat cover**

Modell K 609/1

Seat cover made of Polypropylene.

Fitting our plywood seats 609

Suitable for swivel chairs and visitor chairs.



■ **KOMPLETTA Seat cover**

Modell K 635/1

Seat cover made of Polypropylene.

Fitting our plywood seats 635

Suitable for swivel chairs and visitor chairs.