



# Soochow Advance Industries Co., Ltd.

## Brief Introduction

Soochow Advance Industries Co., Ltd., is a China-based contract manufacturer in the precision CNC engineering industry.



We offer comprehensive machining services for global customers.



We specialize in producing non-standard CNC milled & turned parts using multi-axis sliding head and fixed head lathes.

With sliding head multi-axis CNC lathes (Star, Citizen, Tsugami), we are capable of producing precision complex parts requiring turning, milling, drilling, tapping, broaching etc a single setup.



With the combination of a high-powered turning center and a full-function machining center,

we produce parts by multi-tasking.

Throughout these years we have invested heavily in order to bring our customers the benefits of multi-tasking machining technologies.



Many of our CNC lathes are equipped with automatic bar feeders, which allows us to machine larger batch quantities unattended and produce high volume machining with low labour inputs.

Our CNC machining, turning and milling centers (Robodrill, Doosan, Haas) provide us with expanded capabilities in the machining area.



Our CNC machining facilities is complimented by a range of manual lathes with secondary capabilities including: milling, drilling, tapping, external broaching, threading, thread rolling, slotting, reaming, knurling, grinding, burnishing, shaving, trimming, laser marking etc.





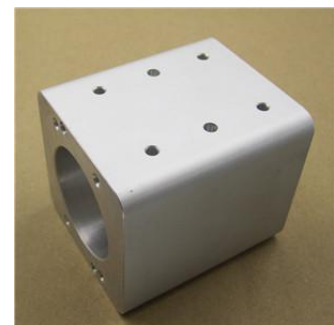
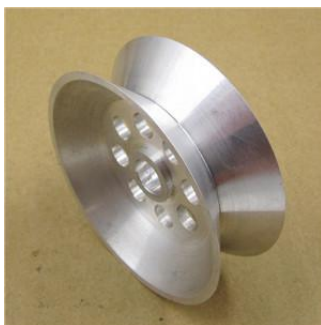
We can work with a wide variety of materials including metals, say, carbon steel, stainless steel, aluminium alloy, copper alloy, pure titanium and titanium alloy and etc, as well as engineering plastics, say, nylon, POM etc.

We are able to meet demands for various material surface finishes, including sand blasting, powder painting, plastic spraying, anodizing, deactivation, electrolytic polishing, mirror polishing, black oxide coating, electrophoresis, galvanizing, nickel plating, gold plating, silver plating, copper plating, zinc-plating, decorative chrome finish, hard chromium plating etc.



We supply custom tight-tolerance parts and assemblies for a diverse range of industries.

Our products include OEM mechanical / machine parts & components, industrial fasteners, screws, bolts, nuts, electric connectors, couplings, pipe fittings, inserts, studs, threaded rods, shafts, pins, stand-offs, spacers, bushings, electronic hardware etc.





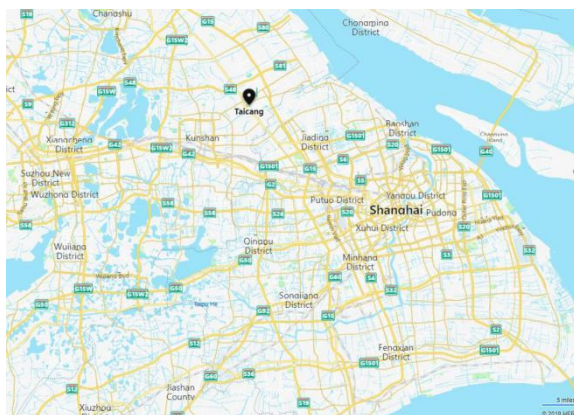
Throughout the manufacturing process our CNC machine programmers and operators continually monitor products in order to verify that measurements adhere to the drawing's specifications.



By employing digital calibration and measurement techniques (2 & 3 dimensional image detector e.g. CMM Zeiss), our full-time quality assurance department inspects at first-off, intermediate stages during production and final inspection to ensure products meet the required specifications and tolerances.

Our highly trained and experienced staffs can offer you in-depth engineering support and work from your drawings to provide a cost effective supply solution.

The CNC capability allows us to be more flexible and enables us the option to produce smaller lot sizes to meet customers' needs.



Our manufacturing facilities are located in Taicang Suzhou, quite near metropolitan Shanghai. In this industrially developed area, with the complete supply chain for machining industry, we can easily get various kinds of materials with the right sizes, correlative secondary operation support and material surface treatment etc. It's very convenient to deliver goods by sea, air and railway & land to the rest of all the world.

Over these years, we have been exporting a wide range of precision parts regularly to many countries. Our machining quality has been well received by a lot of overseas customers.

We sincerely anticipate the chance to work with you.



## **Contact Details**

Soochow Advance Industries Co., Ltd.

Taxpayer's Registration Number: 91320585MA1MHYJL7A

Sales Manager: Roy Zhang

Website: [www.sai-parts.com](http://www.sai-parts.com)

Email: [sales@sai-parts.com](mailto:sales@sai-parts.com) [partspro@yeah.net](mailto:partspro@yeah.net)

Office Phone: + 86 (0)512 - 5356 6992

Mobile Phone: + 86 - 173 5171 1992

Address:

South Chengxi Road 7-80,  
Taicang, Suzhou, Jiangsu Province,  
China

Postcode: 215400